

PERIMETER

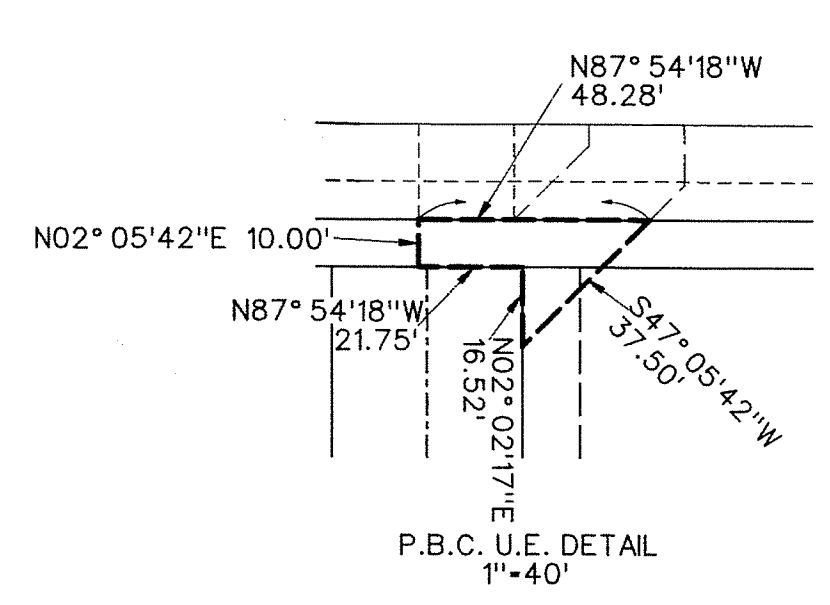
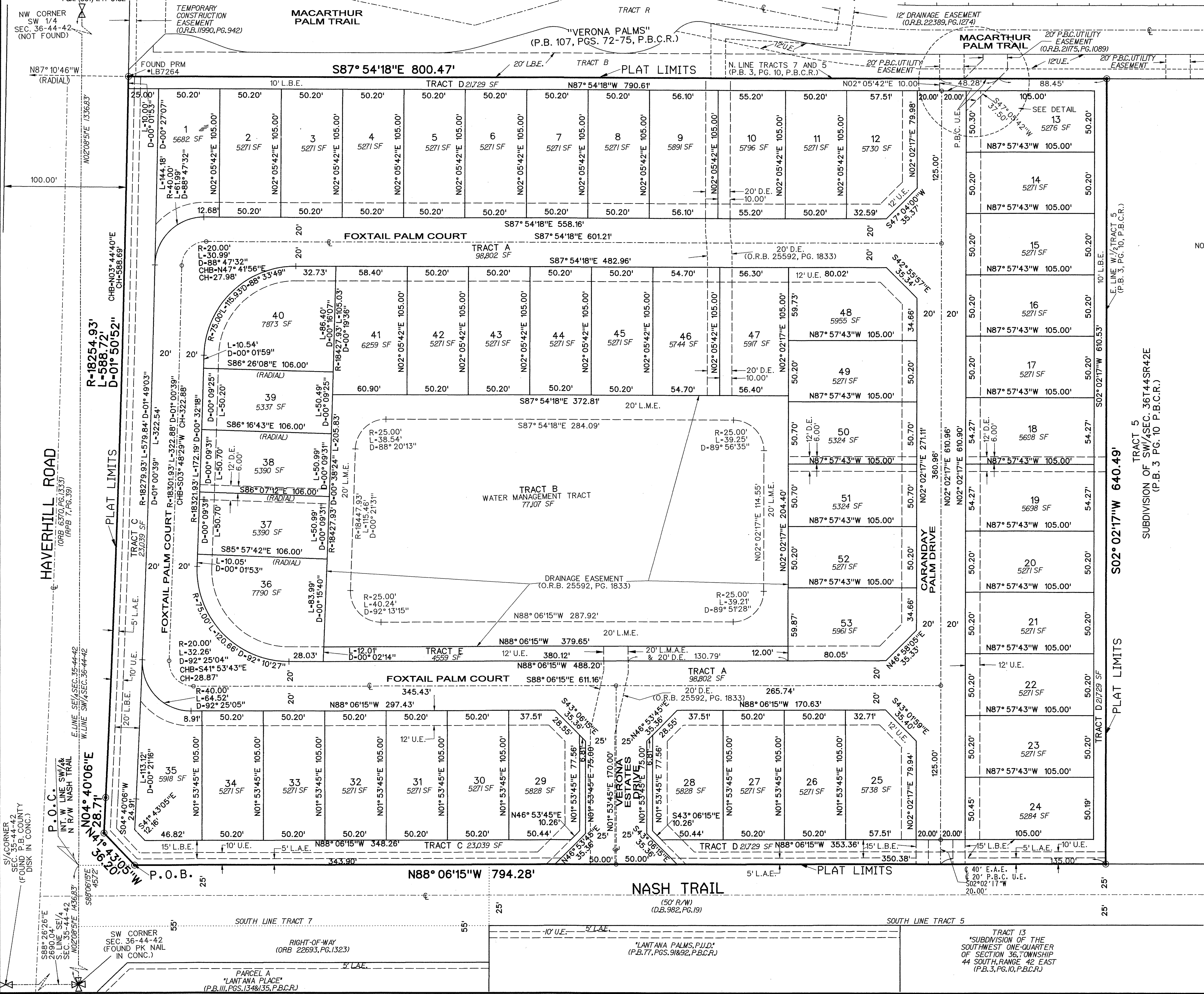
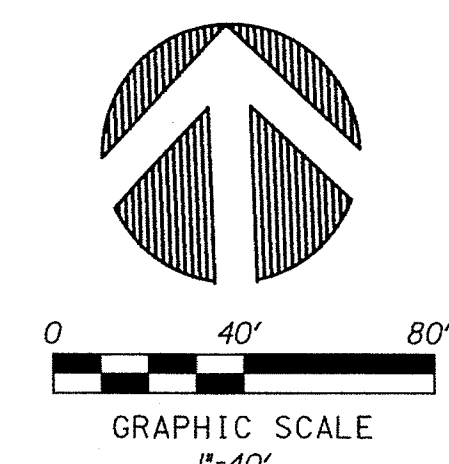
SURVEYING & MAPPING
 Certificate of Authorization No. LB7264
 Prepared by: Jeff S. Hodapp, P.S.M.
 949A Clint Moore Road
 Boca Raton, Florida 33487
 Tel: (561) 241-9988
 Fax: (561) 241-5182

VERONA ESTATES

A REPLAT OF PORTIONS OF TRACTS 5 AND 7, SUBDIVISION OF THE SOUTHWEST ONE-QUARTER
 OF SECTION 36, TOWNSHIP 44 SOUTH, RANGE 42 EAST (P.B. 3, PG. 10, P.B.C.R.),
 CITY OF GREENACRES, PALM BEACH COUNTY, FLORIDA.
 DECEMBER, 2012

68

SHEET 2 OF 2



- LEGEND:**
- ⊙ SET P.R.M. (UNLESS OTHERWISE NOTED)-4" X 4" CONC. MON. WITH ALUMINUM DISK STAMPED P.R.M. • LB7264 P.C.P. CENTERLINE
 -
 -
 -
- ABBREVIATIONS:**
- CH CHORD
 - CHB CHORD BEARING
 - CONC. CONCRETE
 - COR. CORNER
 - D Δ (CENTRAL ANGLE)
 - D.E. DRAINAGE EASEMENT
 - E.A.E. EMERGENCY ACCESS EASEMENT
 - L.A. LENGTH
 - L.B. LICENSED BUSINESS
 - L.B.E. LANDSCAPE BUFFER EASEMENT
 - L.E. LANDSCAPE EASEMENT
 - L.M.E. LAKE MAINTENANCE EASEMENT
 - L.M.A.E. LAKE MAINTENANCE ACCESS EASEMENT
 - L.S. LICENSED SURVEYOR
 - L.W.D.D. LAKE WORTH DRAINAGE DISTRICT MONUMENT
 - MON. MONUMENT
 - O.R.B. OFFICIAL RECORDS BOOK
 - N.R. NON-RADIAL
 - P.B. PLAT BOOK
 - P.B.C.R. PALM BEACH COUNTY RECORDS
 - P.B.C.U.E. PALM BEACH COUNTY UTILITY EASEMENT
 - PG. PAGE
 - P.C.P. PERMANENT CONTROL POINT
 - P.O.B. POINT OF BEGINNING
 - P.O.C. POINT OF COMMENCEMENT
 - P.P.M. PERMANENT REFERENCE MONUMENT
 - P.S.M. PROFESSIONAL SURVEYOR & MAPPER
 - P.U.D. PLANNED UNIT DEVELOPMENT
 - R. RADIUS
 - R.E.E. ROOF ENCROACHMENT EASEMENT
 - R.O.W. RIGHT-OF-WAY
 - SEC. SECTION
 - S.F. SQUARE FEET
 - U.E. UTILITY EASEMENT